

Experience Energy Independence



Power Everything

Every Tesla product is designed to work together to create a fully integrated energy ecosystem.

1 Solar Panels

Capture unlimited sunshine with a low-profile design and generate clean solar energy

2 24/7 Control

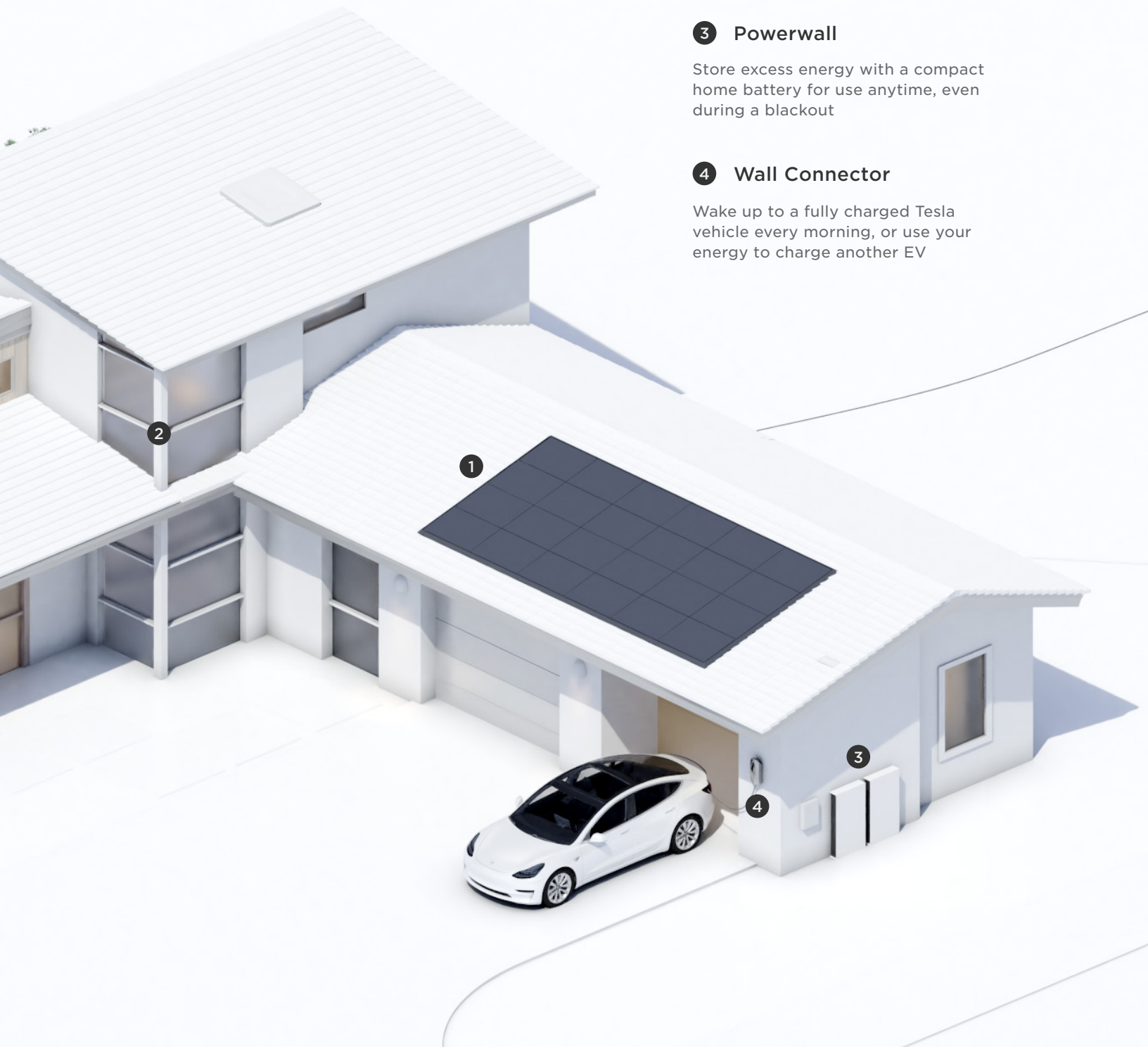
Power your home with the energy you produce and manage your system remotely

3 Powerwall

Store excess energy with a compact home battery for use anytime, even during a blackout

4 Wall Connector

Wake up to a fully charged Tesla vehicle every morning, or use your energy to charge another EV



Solar Panels

Low Profile

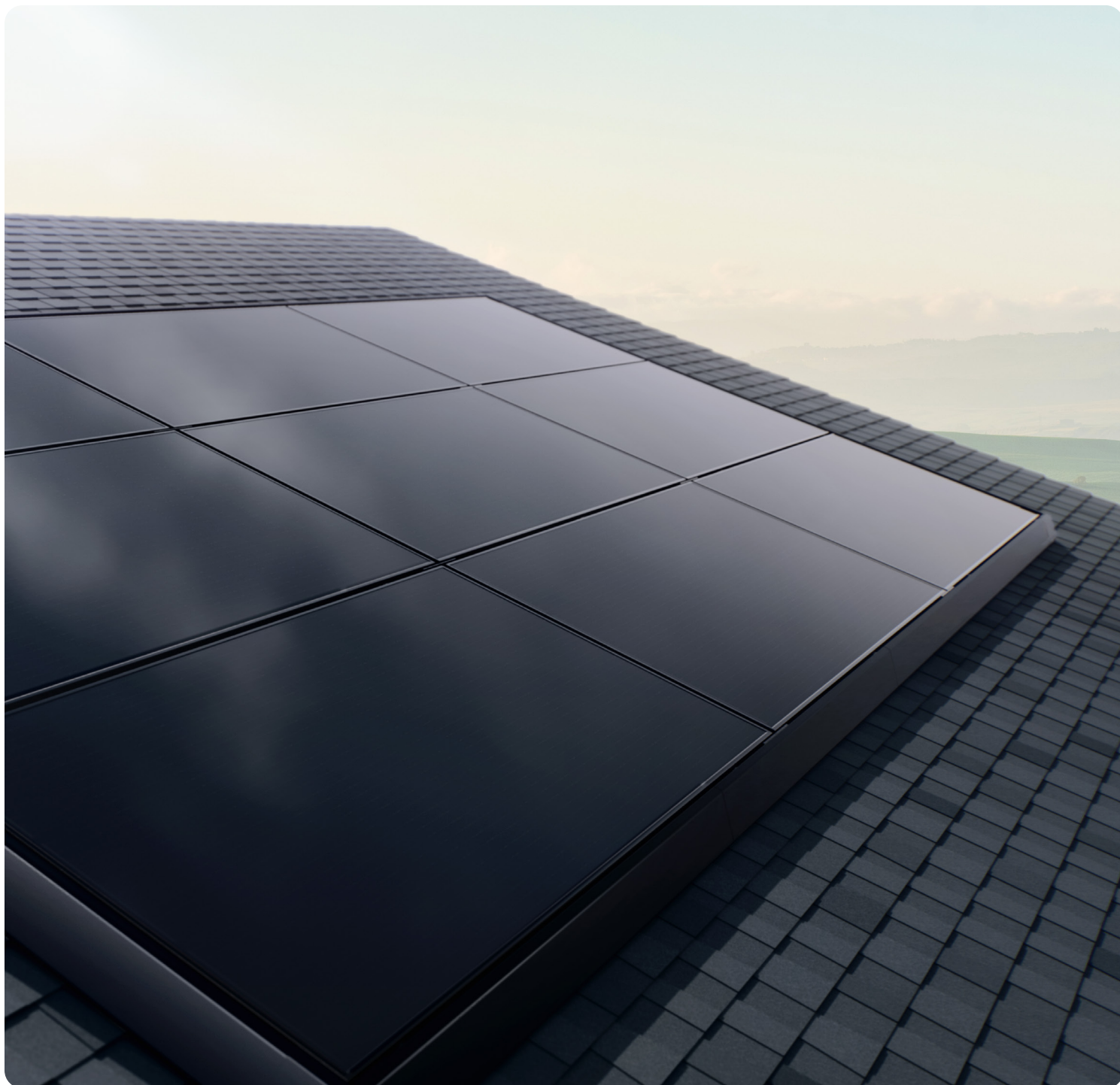
Rail-free mounting keeps panels close to your roof and close to each other

No Visible Grid

All-black panels and interlocking brackets create one solid array

Concealed Edges

A front skirt hides integrated hardware and protects against debris



Energy Independence

Take control of your monthly electricity bill by reducing your reliance on the grid and power your home with clean solar energy anytime.



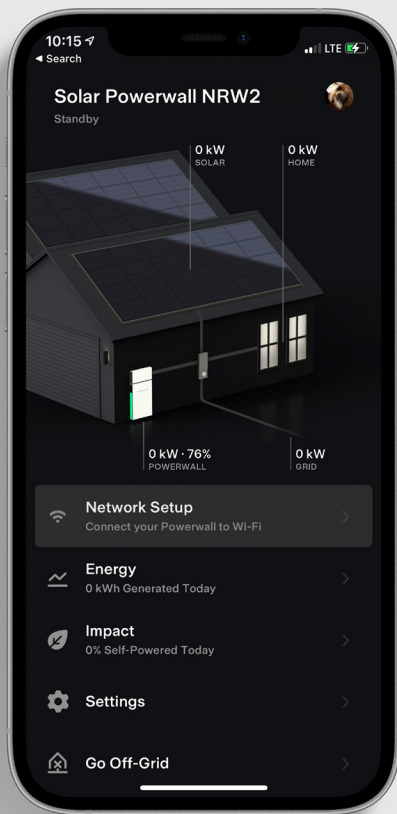
Backup Protection

Powerwall is a compact home battery that is bundled with every Tesla solar purchase, providing you with 24/7 energy security.

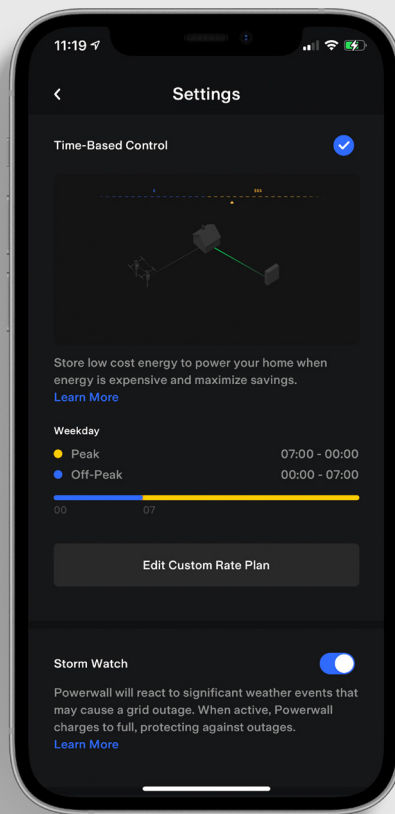


24/7 Control

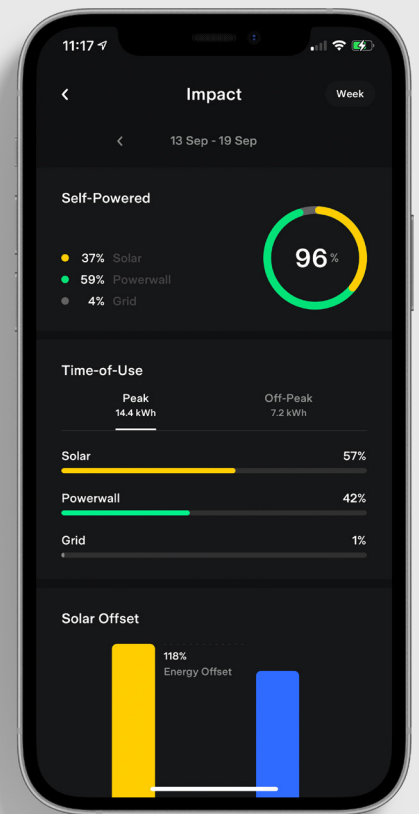
Monitor your energy production and consumption in real time and optimize your system for energy independence, outage protection or savings.



Manage and track your energy with instant notifications, simplified graphs and easy navigation



Prepare your system for outages and recharge with sunlight to keep your appliances running for days



Learn how your system uses energy on a daily, weekly or monthly basis.

One System

Your fully integrated solar and storage system is designed and warranted by Tesla. Backed by a 25-year performance guarantee, it will continue to produce clean energy for decades to come with support from our in-house team of energy professionals.



Powerwall

Energy Capacity
13.5 kWh

Continuous Power
5kW

AC Motor Start
118 LRA

Scalability
Up to 10 Powerwalls

Roundtrip Efficiency
90%

Solar Panels

Wattage
420 W

Installation
Integrated racking

Frame Type
All-black anodized
aluminum alloy

Solar Inverter

Power
7.6kW

Maximum Power
Point trackers
4

CEC Efficiency
97.5% at 240 V

Connectivity

Communication
Wi-Fi, ethernet, cellular